



# TRANSFORMING THE MUSEUM OF OXFORD





## OUR VISION

The new Museum of Oxford will be a **people's** museum, a resource for **discovering, interpreting, and sharing** the rich heritage of Oxford's **diverse communities**. We will be telling the stories of individuals, communities and **businesses** whose stories have contributed to the vibrant and dynamic city that we see today. Visitors who engage with Oxford's hidden histories will **see the city in a different and richer light**.

*The new museum will:*

- make objects in storage accessible; uncover archival records mapping the city's development; and explore Oxford's diverse heritage through academic research and oral histories;
- build on strong relationships with the city's communities to develop dynamic, flexible, co-curated exhibitions;
- enrich the visitor experience through state of the art, interactive displays;
- provide more space, and more flexible use of space to accommodate school, groups, community use and events.



## THE STORY SO FAR...



We have **detailed designs** for both the architectural work and the exhibitions. We have begun to deliver our new **programme of activities** with the recruitment of new members of staff. As the Museum expands, the programme will develop.

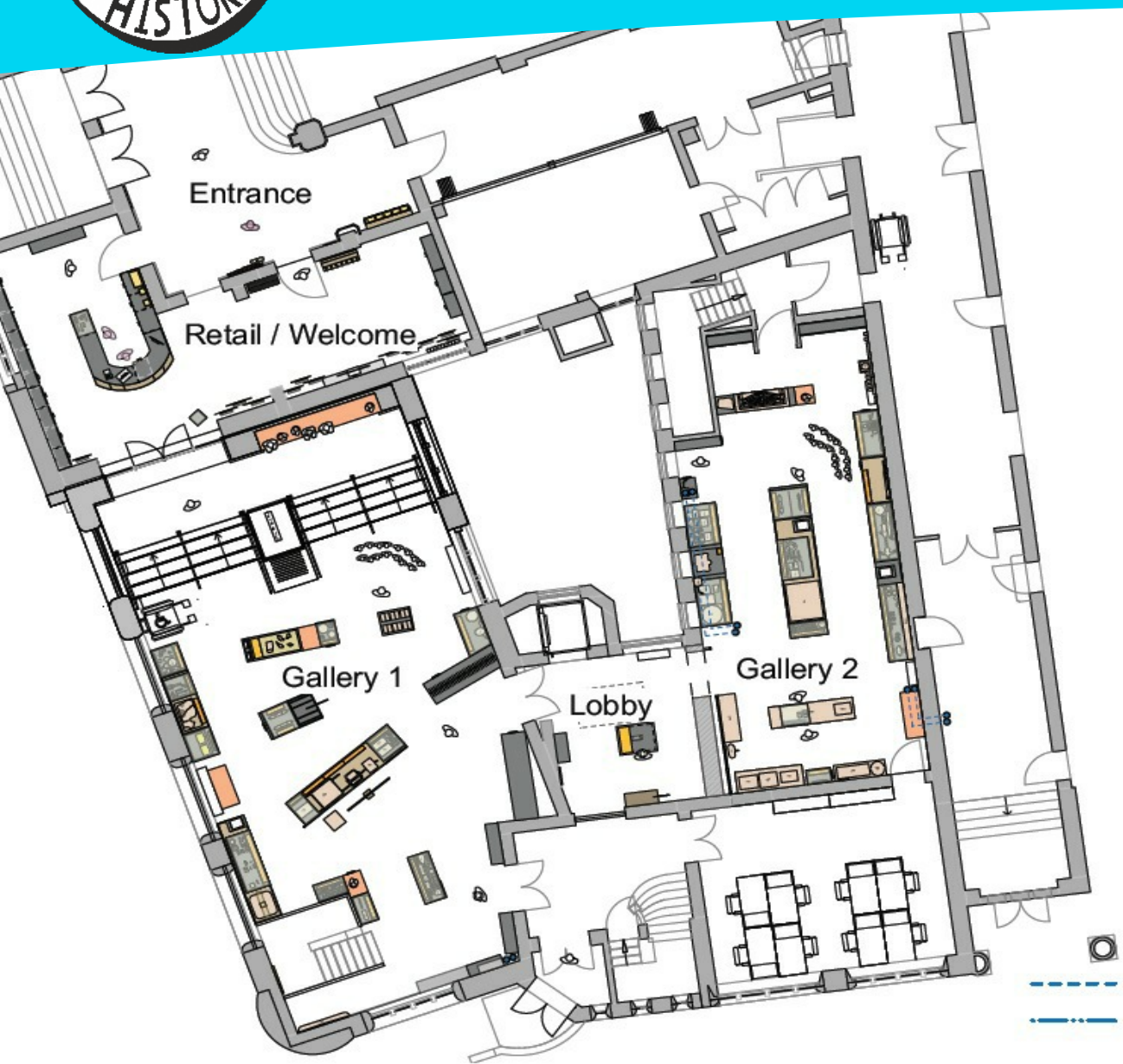
Some of the highlights so far:

- Recruiting a Volunteer Engagement Officer, a Community Engagement and Exhibitions Officer, a Project Assistant and a Schools Engagement Officer;
- A community led exhibition, The Windrush Years - Next Generations, completely co-curated and led by Oxford residents with links to the post WW2 migrants from the Caribbean;
- Selection of themes and objects for new museum displays, developing labelling and creating stories with volunteers and members of the public;
- Building work will start in July 2019.





# TRANSFORMING THE MUSEUM OF OXFORD



This floor plan for the new Museum shows the proposed layout of the spaces for the ground floor. Focused on **welcoming visitors** and **displaying the collections**, these will be the main new spaces for visitors:

- **The Retail and Welcome** space will ensure that all visitors can easily access information and will enter and exit through the gift shop;
- **Gallery 1** will be our largest gallery covering Oxford's earliest settlers as well as the variety of people and communities who have created the city we know today. Change and continuity is explored through themes such as War and Pubs and Breweries;
- The **Lobby** area will be home to an exciting interactive table, sharing some of Oxford's most unique hidden histories! Wheel chair access is also available for the first time to the lower ground floor level with the installation of a lift;
- **Gallery 2** continues the theme of Change and Continuity by looking at Oxford's trades and shops before delving into prominent Oxford people, famous sporting achievements and innovative discoveries that have taken place in the city.

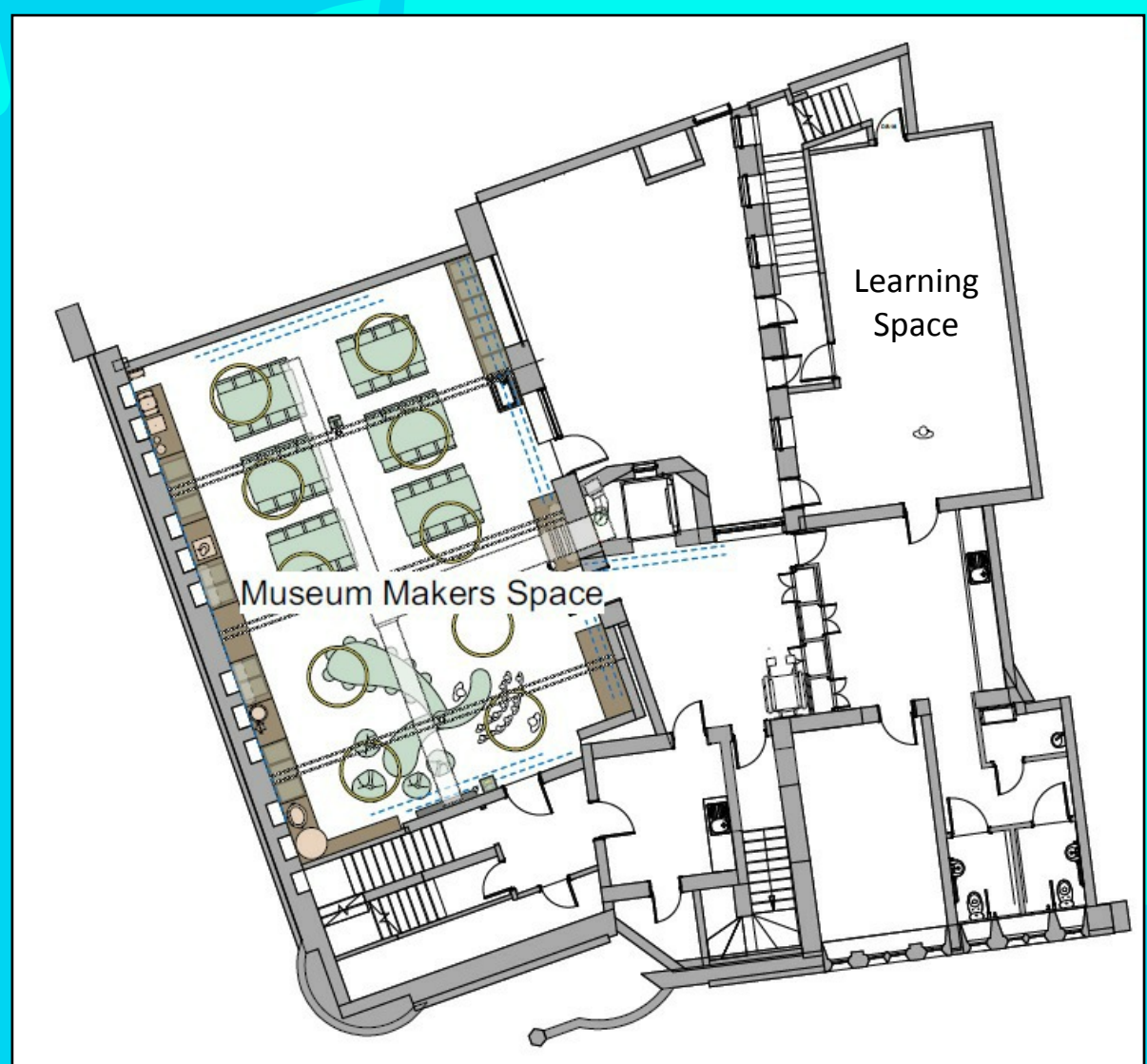
## EDUCATION AND COMMUNITY

The **Lower Ground floor** will be dedicated to **education** and **community engagement**. **Museum Makers** will be a flexible space with handling collections on display to promote **sessions with schools**. This will also be a **hirable** space. A separate **learning space** for quieter school sessions and talks will be available

A **platform lift** will provide access from the ground floor level. There will be new **toilet facilities**. **Storage** and a **kitchen area**, as well as space for **volunteers and staff to rest** make this a functional space for the Museum to deliver activities.



"Wonderful to see how many peoples and cultures have enriched the life of Oxford"  
Visitor to 'Journeys to Oxford' exhibition







# WHAT WILL IT COVER? 3 THEMES

## EVERY COMMUNITY LEAVES ITS MARK

The landscape of Oxford has changed as different communities moved in, developed or moved away. This theme looks at the rich legacies they have left behind and what it tells us about them. The Town Hall stands at the centre as a hub for diverse local communities; there has been integration and division over the years.

**Roman Archaeology** - displaying Roman pottery with the first name of a worker in the area of the city.

**Oxford's Archaeology** - this case will highlight new archaeological discoveries.

**Saxon Oxford** - displaying objects from Oxford's earliest permanent settlers and what life was like in the burh.

**Medieval Oxford** - displaying objects describing life in Medieval Oxford, with focus on Oxford's Jewish Heritage.

**People of Oxford timeline** - welcoming visitors as they enter, this display will take a look at Oxford people through time.

**Journeys to Oxford** - displaying objects from Oxford's diverse communities and the impacts of migration on the city.

**The Cutteslowe Walls** - displaying the walls' spikes as well as exploring this divisive event in Oxford's history.

**Houses over time** - a series of interactive models showing how the living room has changed from Saxon times to the modern day.



*Medieval Cresset Lamp*

**Maps of Oxford** - a series of maps showing how Oxford has developed from the Saxon settlement to the modern day.

## CHANGE AND CONTINUITY

Many of Oxford's buildings remain the same and certain themes weave through the history of the city. However, significant changes have taken place in the city and in people's lives through the development of trade, industry, civic/political change and war. Lives were and are still being changed as a result of decisions made in the Town Hall.

**Brewing and pubs** - displaying objects from local breweries and pubs. Exploring changes and the impact to local people.

**Gas Lamp, Oxford Services** - displaying objects related to street lighting and essential services, such as drainage, bathing places and cemeteries.

**Car Factory** - displaying objects belonging to workers of the car plant and relating to William Morris.

**Coopers Marmalade** - displaying objects from the Frank Coopers factory, including jars and making tools.

**War in Oxford** - displaying objects covering Oxford's responses to the First and Second World Wars as well as the Cold War.

**Community Cases** - these cases will house outputs from projects with Oxford's diverse communities.

**Town and Gown** - displaying objects which highlight the relationship of the city and the university.

**Trades** - displaying objects spanning generations of traders in the city.

**Shops** - displaying objects from Oxford's historic shops including Capes and Anna Belinda.

**Civil War** - displaying objects relating to the Civil War and how this event shaped and impacted the City.



*Anna Belinda Suit Jacket*

# WHAT WILL IT COVER? 3 THEMES

## CIVIC PRIDE

The city is famous for its universities and the advances that have been made in science, arts and sport over hundreds of years. Oxford Town Hall, the heart of political decision making, is a focus for civic pride. There has been a municipal building on the site of the Town Hall since 1229 when the city's first guildhall was built.

**Alice and Oxford** - objects belonging to Alice Liddell, the muse for Lewis Carroll's Alice in Wonderland.

**Carfax Quarter Boys** - will be displayed at a high level. We will explore the history of St Martin's church.

**Transport and infrastructure** - how people get about in Oxford and the infrastructure supporting this.

**Innovation** - highlighting the scientific innovation and achievements that have taken place in Oxford.

**Traditions, Festivals and Events** - Oxford's events and, sometimes unusual, traditions. Including St Giles Fair and May Day.

**Sport** - representing the city's diverse sporting interests and achievements. We will explore some of Oxford's lesser known sporting heritage.

**Oxford at Leisure** - the world of cinema, music venues, dance halls and theatres, exploring Oxford's leisure culture.

**The Council and the Town Hall** - the Council's activities, and the Town Hall as a symbol of its functions.

**Alderman Fletcher** - a unique collection that will describe Fletcher's life, his achievements and other Aldermen and Mayors from Oxford.

**Policing Oxford** - Oxford's police force, the relationship with the University and the Town Hall as the former home of the Police Station.

**John Davenant and Elizabethan Inns** - will explore Oxford's importance as a stopping point for travellers, including Shakespeare.

**Tourism in Oxford** - Oxford's booming tourist trade and the sights that entice visitors to the city.



*Policeman's helmet, City of Oxford*



# Museum of Oxford Appeal Gift Chart

With £2.7 million raised towards out total target of £3.01 million, we complete the appeal with the ten donations £305,000 shown in the chart below. Donations range from £5,000 to £100,000.



**HERITAGE FUND**



**OXFORD CITY COUNCIL**

This project is supported by the **National Lottery Heritage Fund** and **Oxford City Council**.

Heritage Lottery Fund £1,634,700	
Oxford City Council £930,948	
1 £100,000	2 £100,000
Arts Council £80,000	Other £50,000
Swire CT £10,000	5 £10,000
6 £10,000	7 £10,000
8 £10,000	9 £10,000
10 £5,000	Other £5,000
Total	£3,015,648
Raised	£2,710,648
Target remaining:	£305,000

# CONTACT US

Please do email us:  
[museum@oxford.gov.uk](mailto:museum@oxford.gov.uk)  
Or call  
01865 252334

